

[mod][mt6573] Random Bootanimations for mdpi (320x480) & boot logo  
Logo Builder by Kadan  
by yuweng@xda

Prerequisite : ClockworkMod Recovery (CWMR) or Smart Phone Flash Tool

Found another useful tool that wasn't built for MT6573 but works fine on it. There is not much info on this tool however one forum mention it is developed by Kadan believed to be russian.

LogoBuilder by Kadan

Download link

<http://www.mediafire.com/?369yy4vvuegs08h>

Paint.Net

Download link

<http://www.getpaint.net/download.html>

logo\_bin.zip for created logo.bin (CWMR)

Download link

<http://www.mediafire.com/download.php?1iiqqkcu8y6by6e>

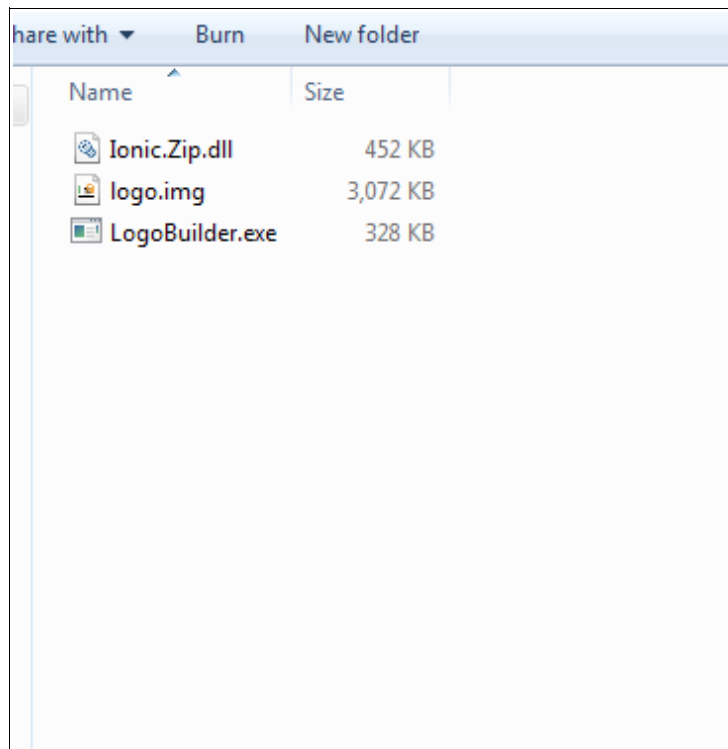
logo\_img.zip for created logo.img (CWMR)

Download link

<http://www.mediafire.com/download.php?6q4d7j69jpub7c2>

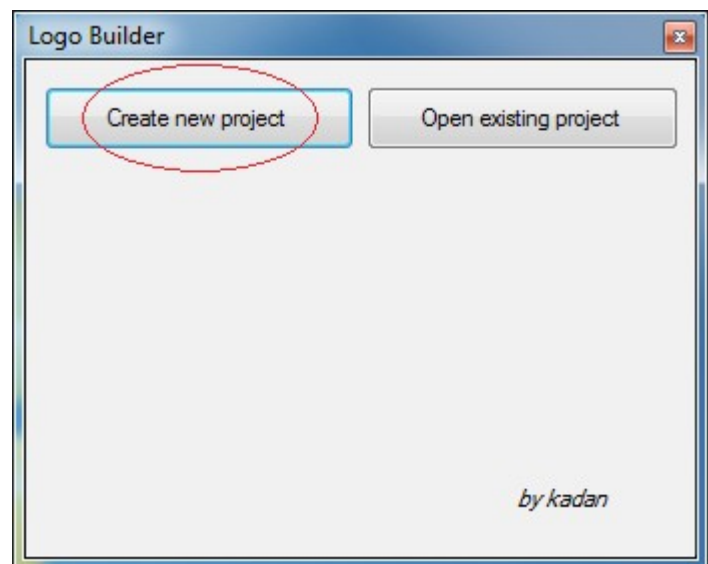
If you don't have CWMR then follow the tut below

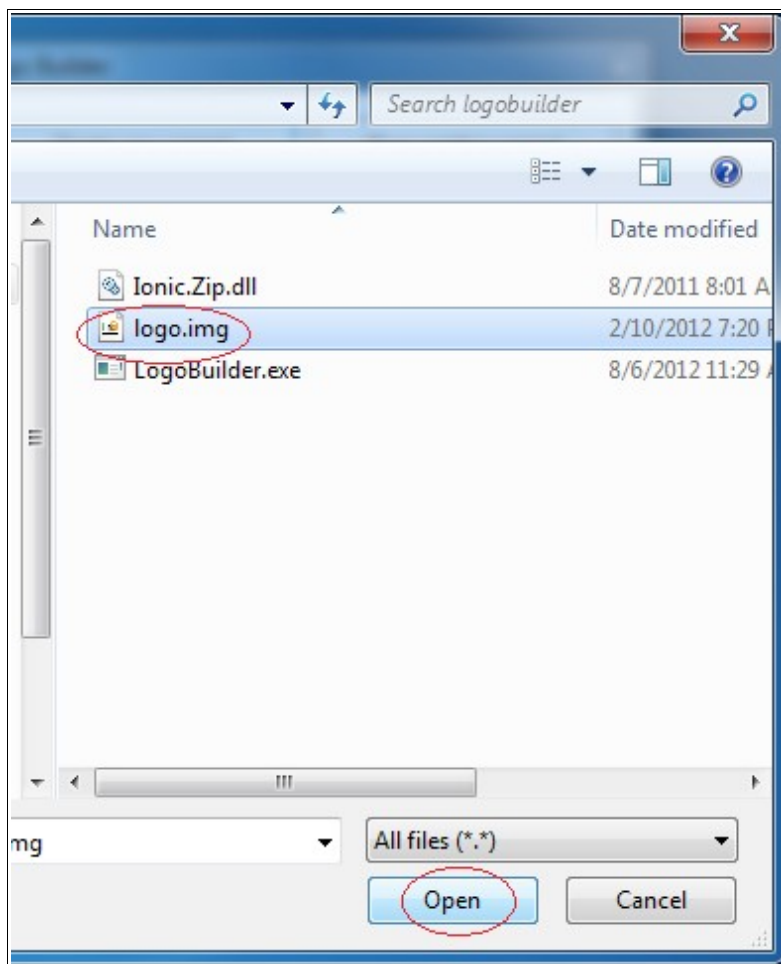
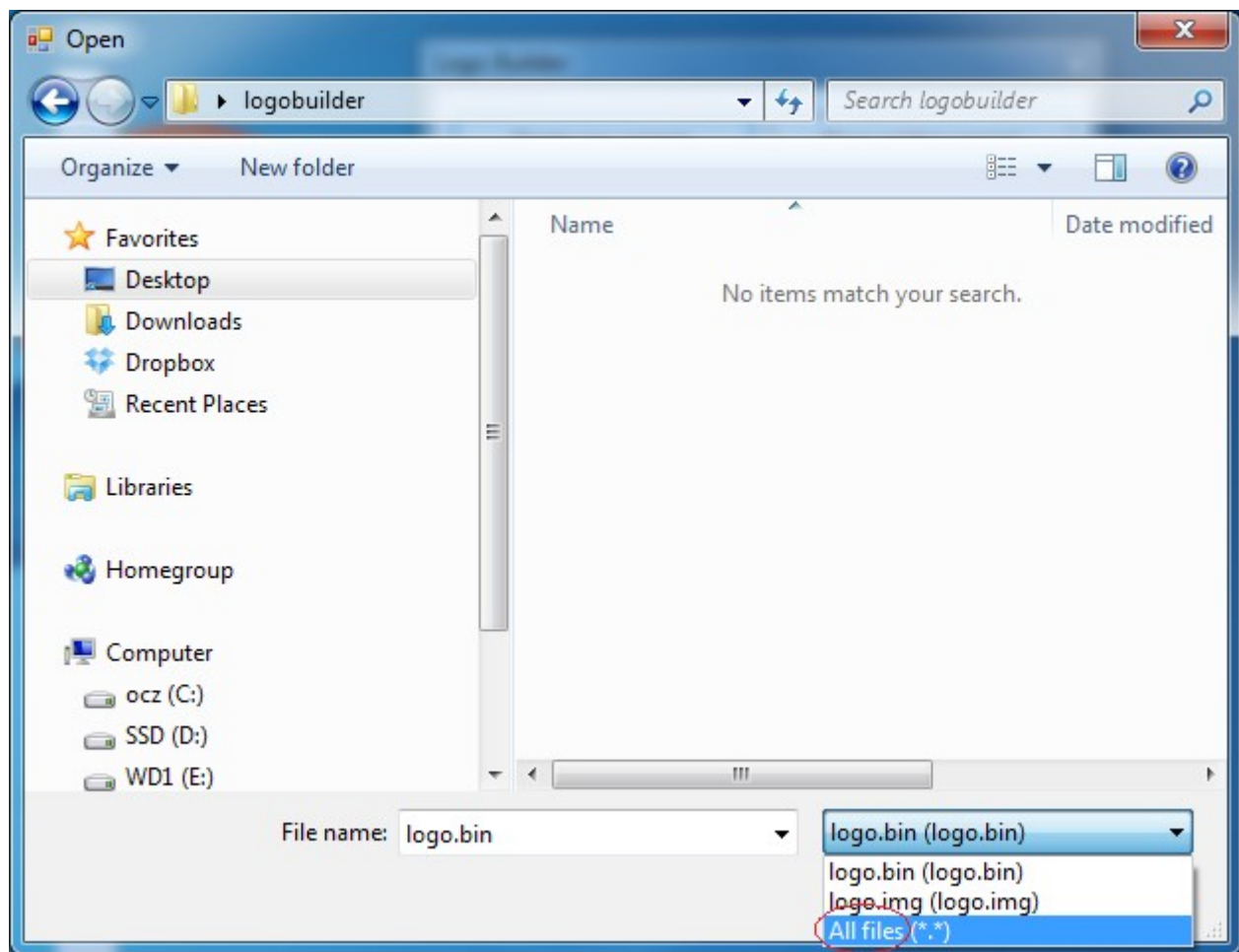
<http://forum.xda-developers.com/showthread.php?t=1825722>



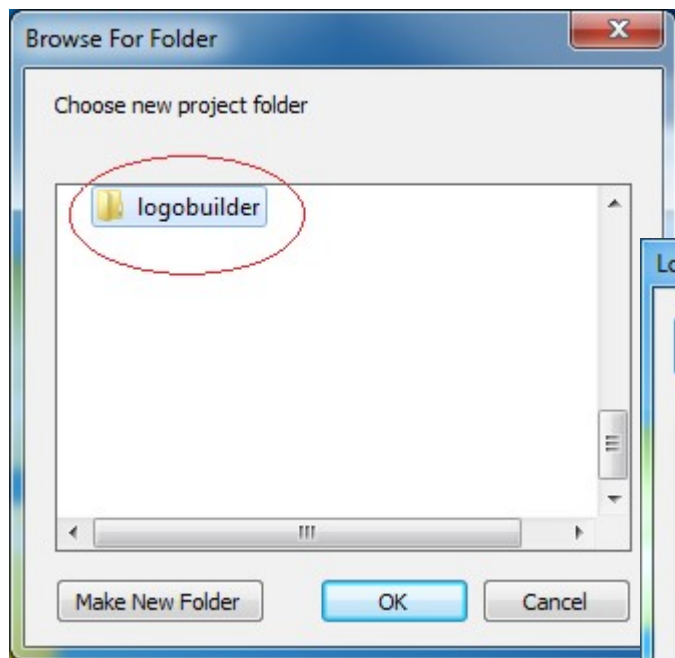
Extract your [logo.img/ logo.bin](#) to the same folder as [LogoBuilder.exe](#)

Create new project

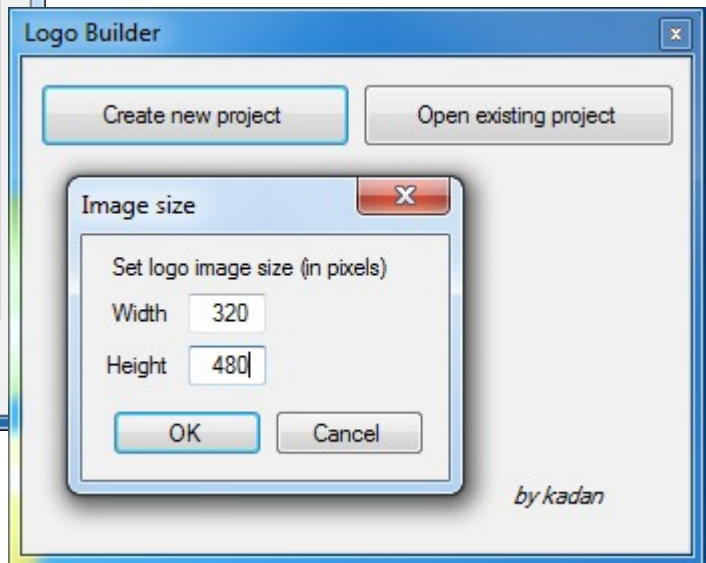




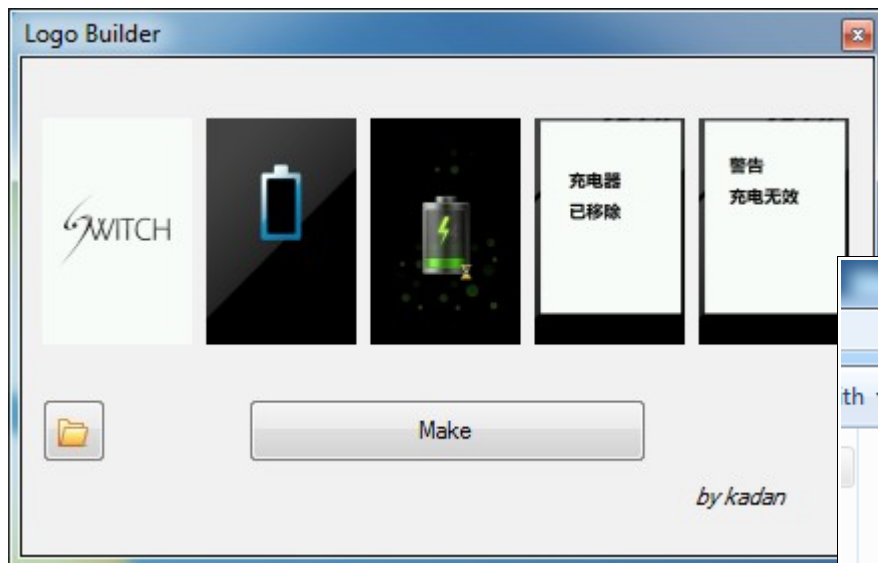
Select [All files](#) & you'll see [logo.img/](#)  
[logo.bin](#). Click [open](#)



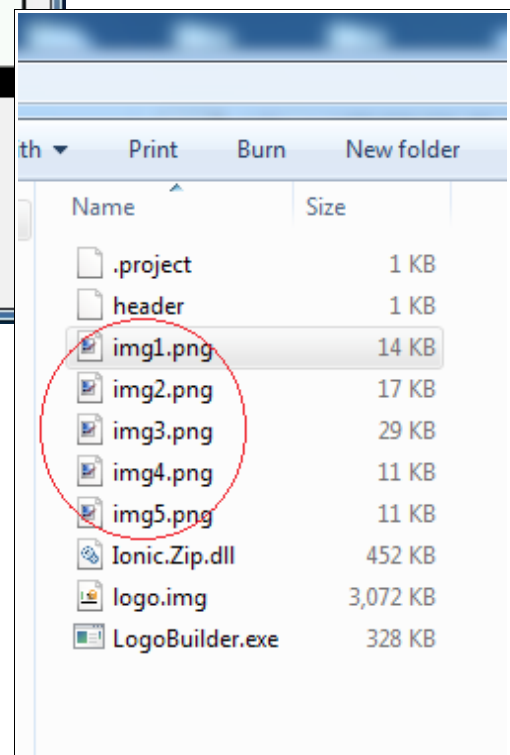
← Select the same folder or you can create a new folder



Select the correct size of your [logo.img/ logo.bin](#).

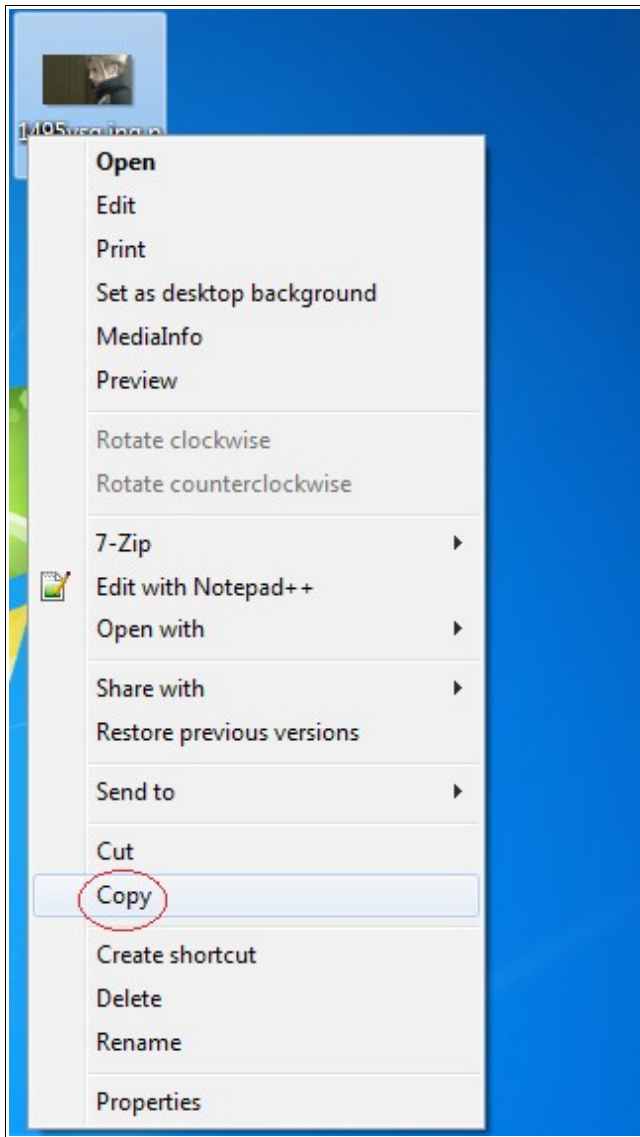


Once extracted, all image will be displayed



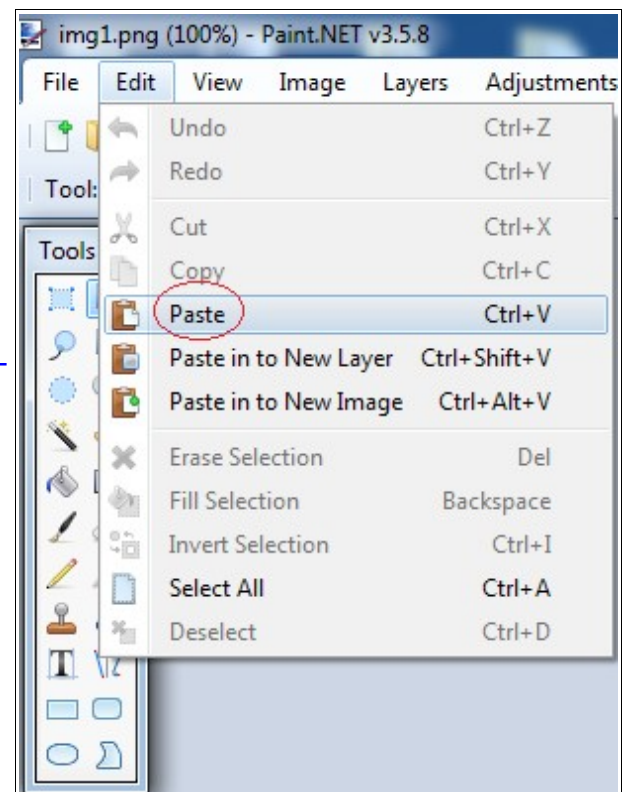


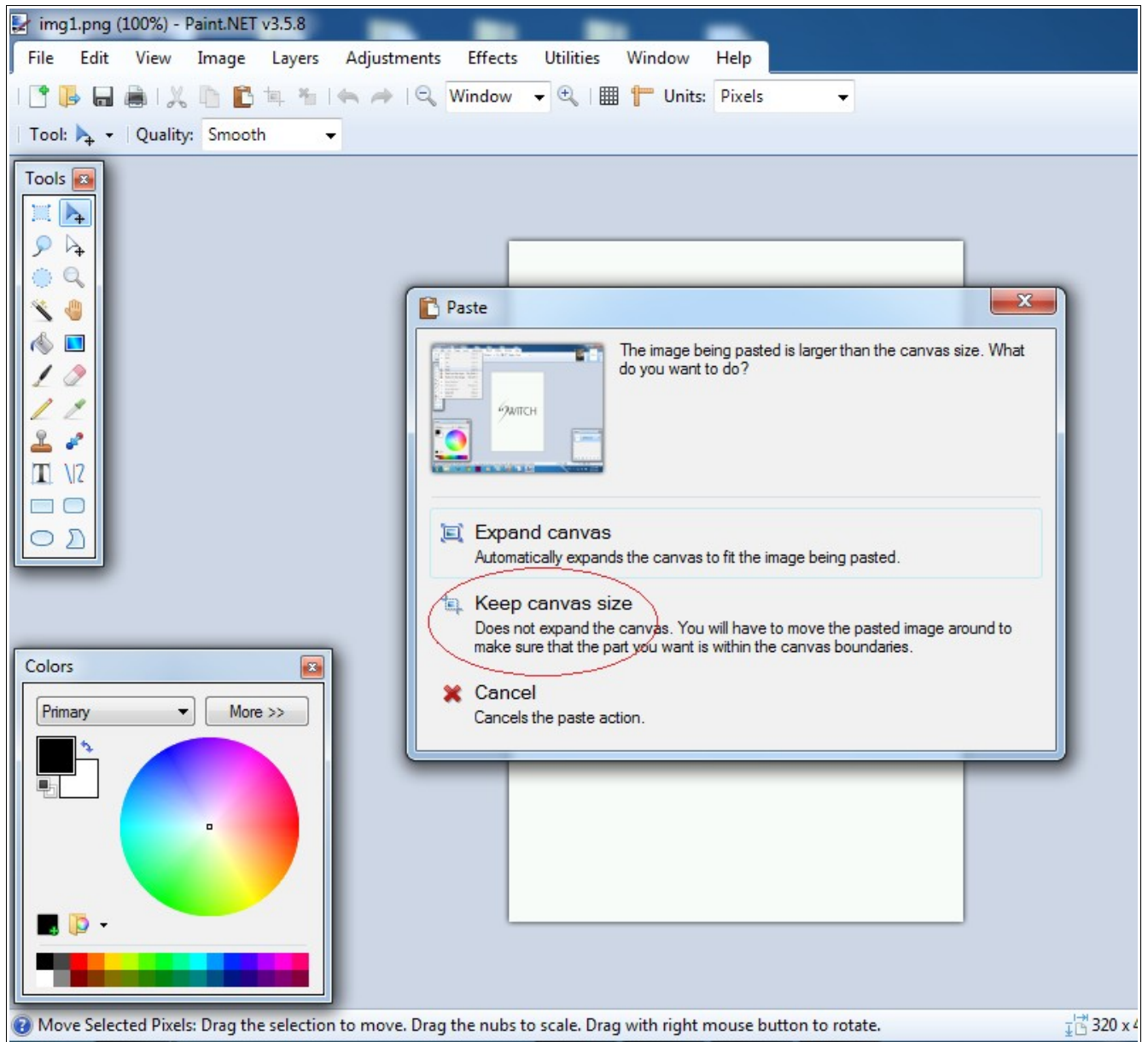
Use [Paint.NET](#) to open the [img1.png](#)



Just copy the image you want to use

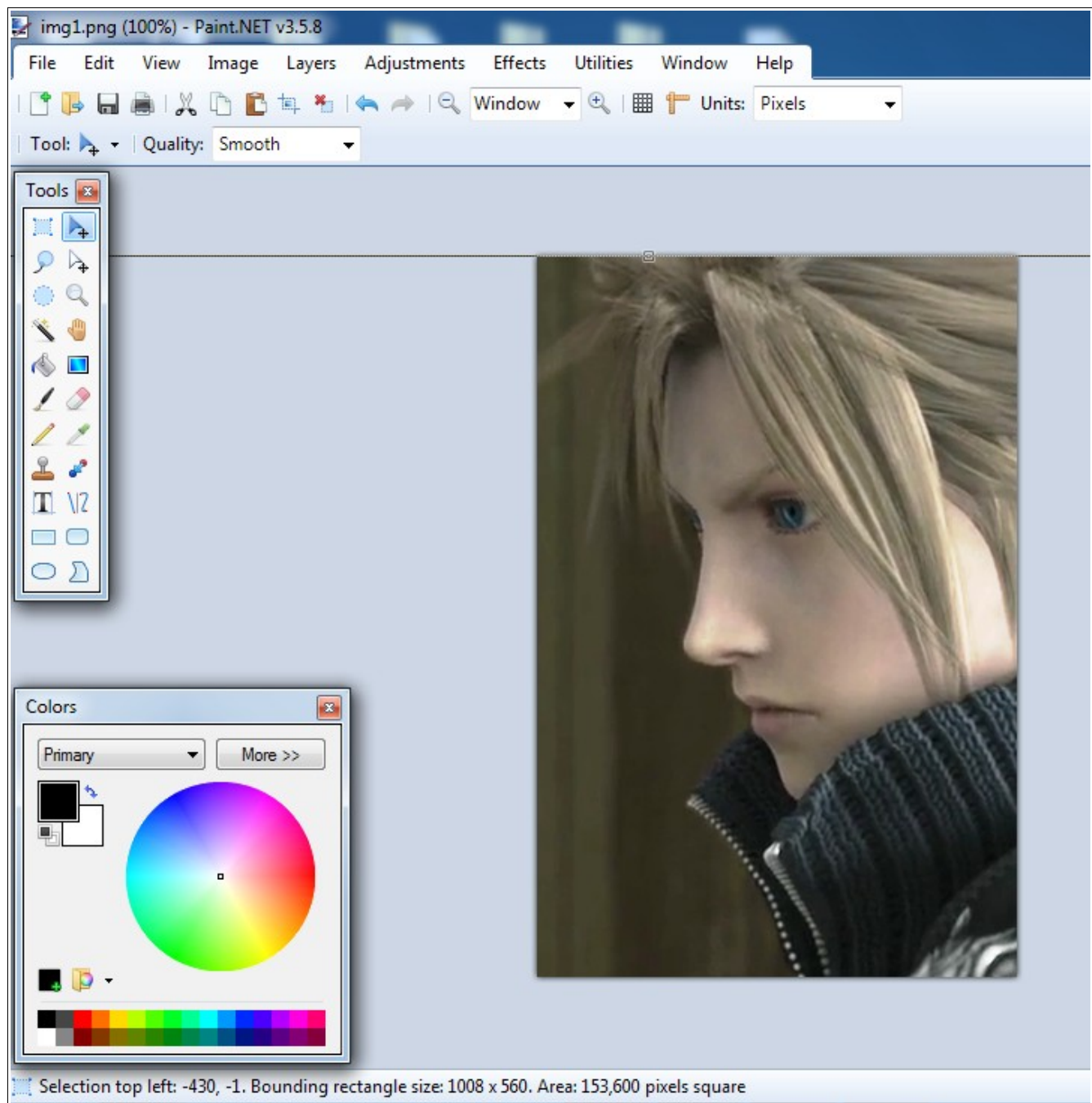
Paste it over at [Paint.NET](#)





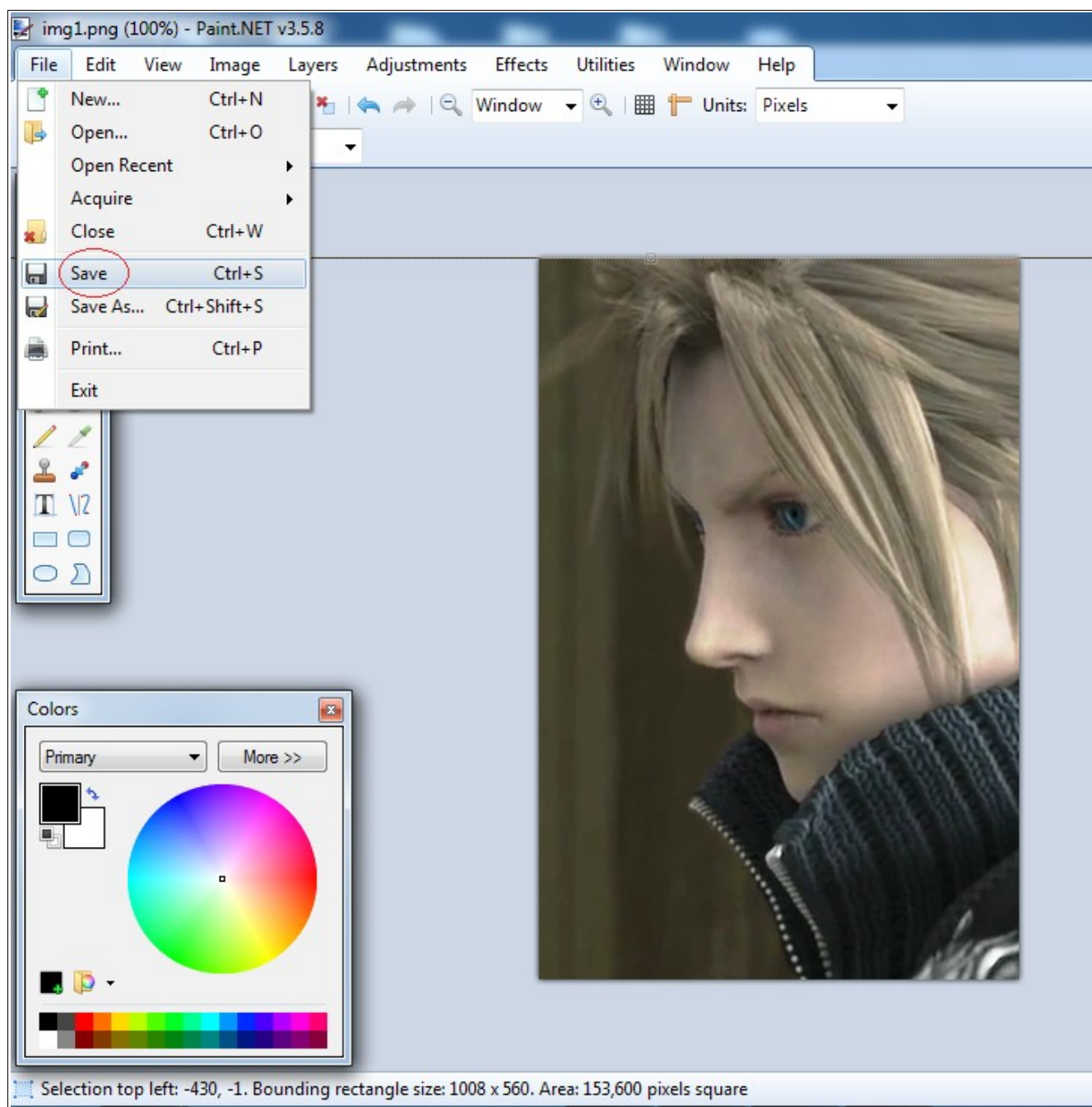
Keep canvas size



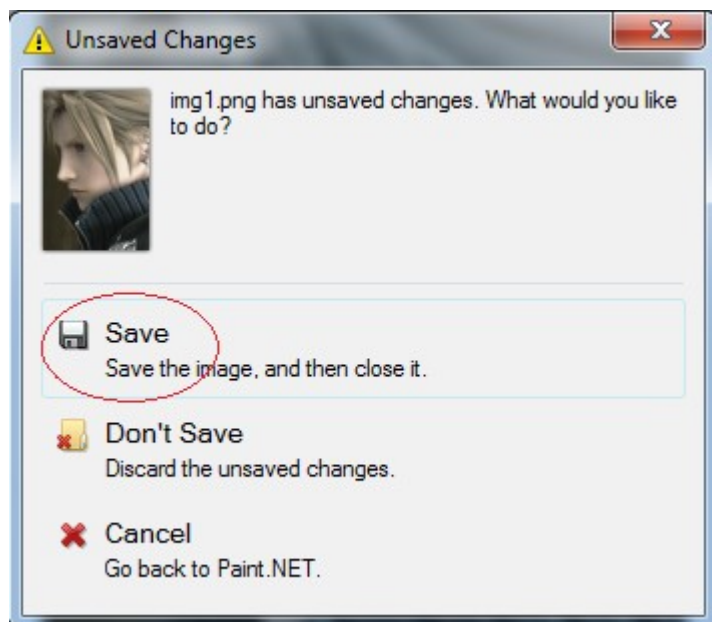
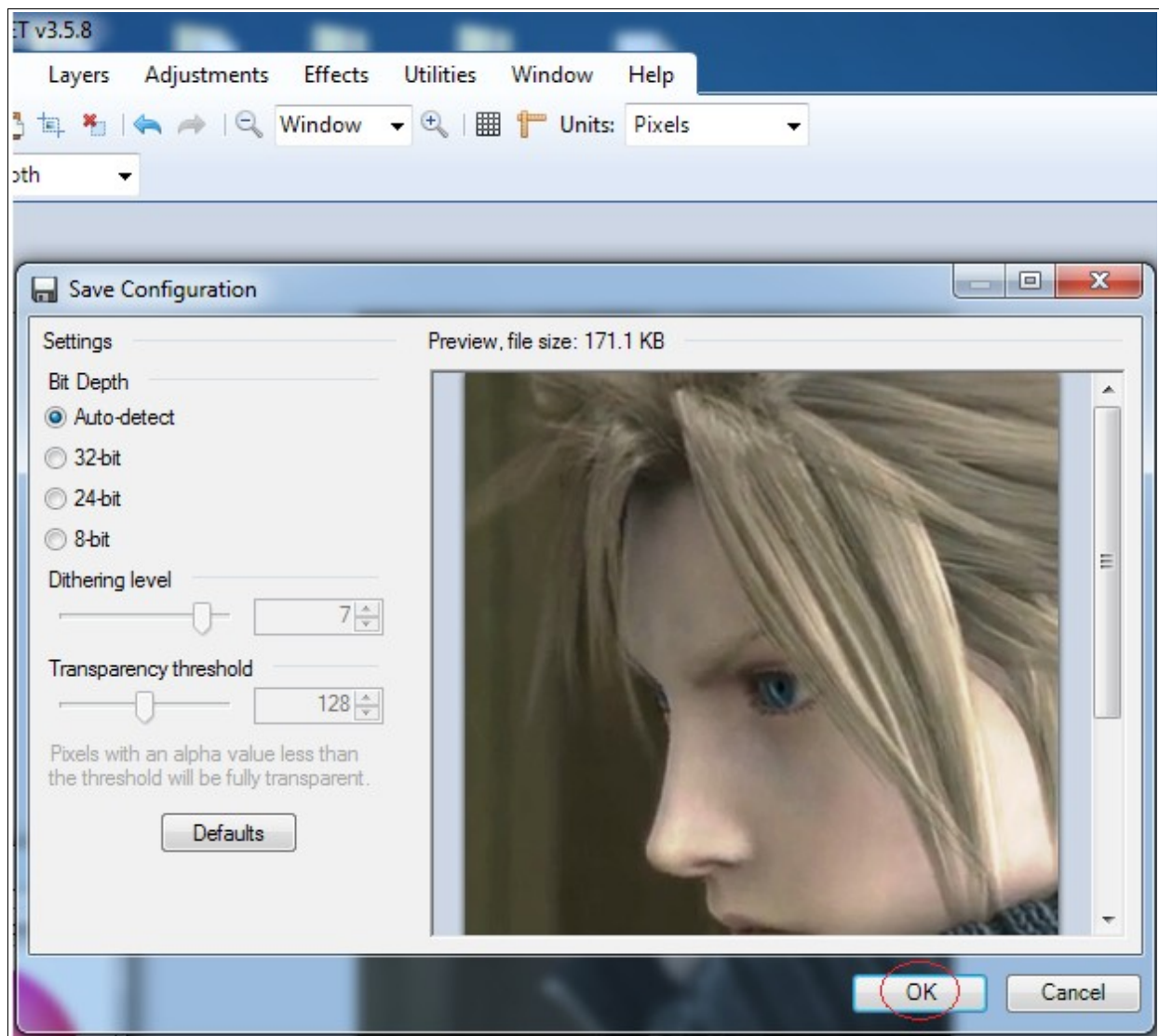


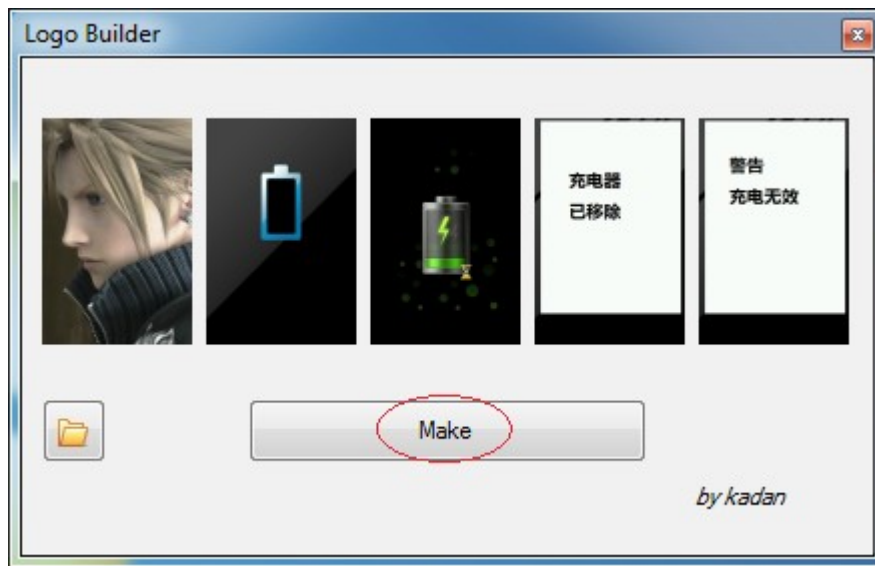
You might need to align image left/ right/ up / down to you liking



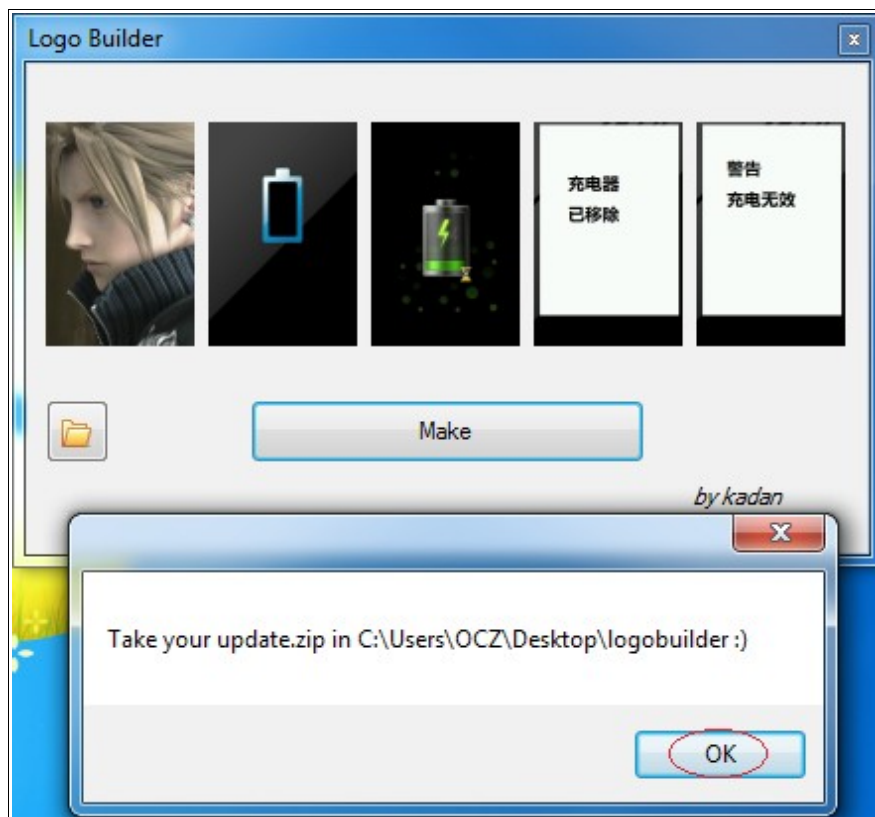


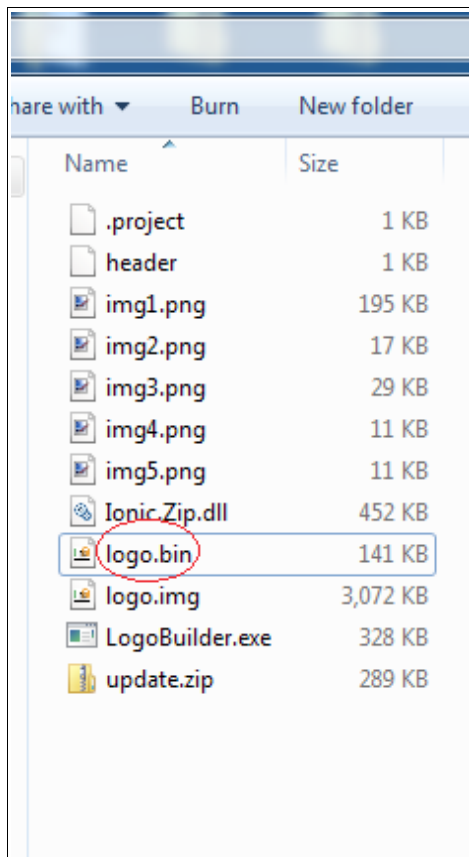
Save it





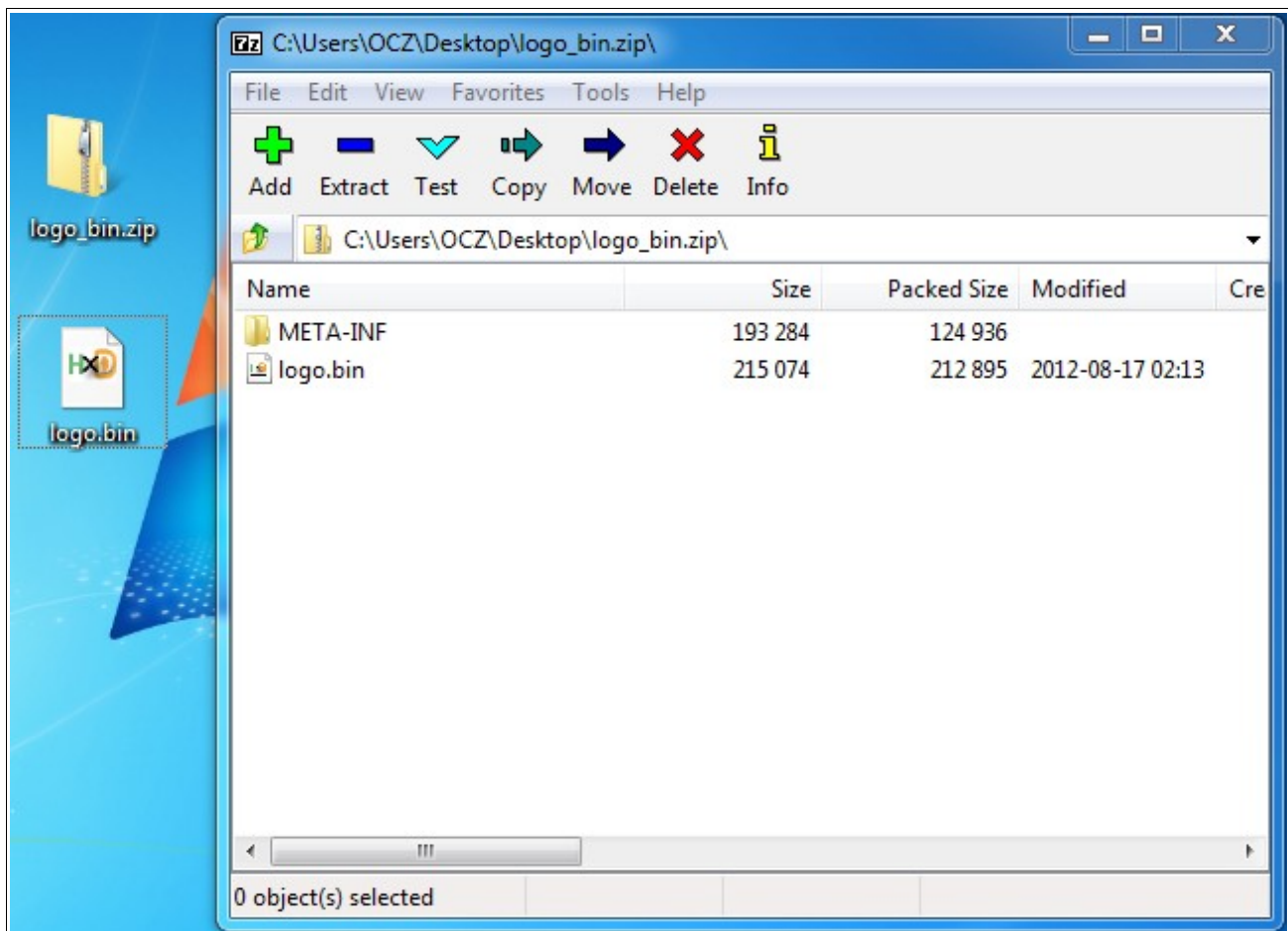
At LogoBuilder, select [open existing project](#) & click at [Make](#)



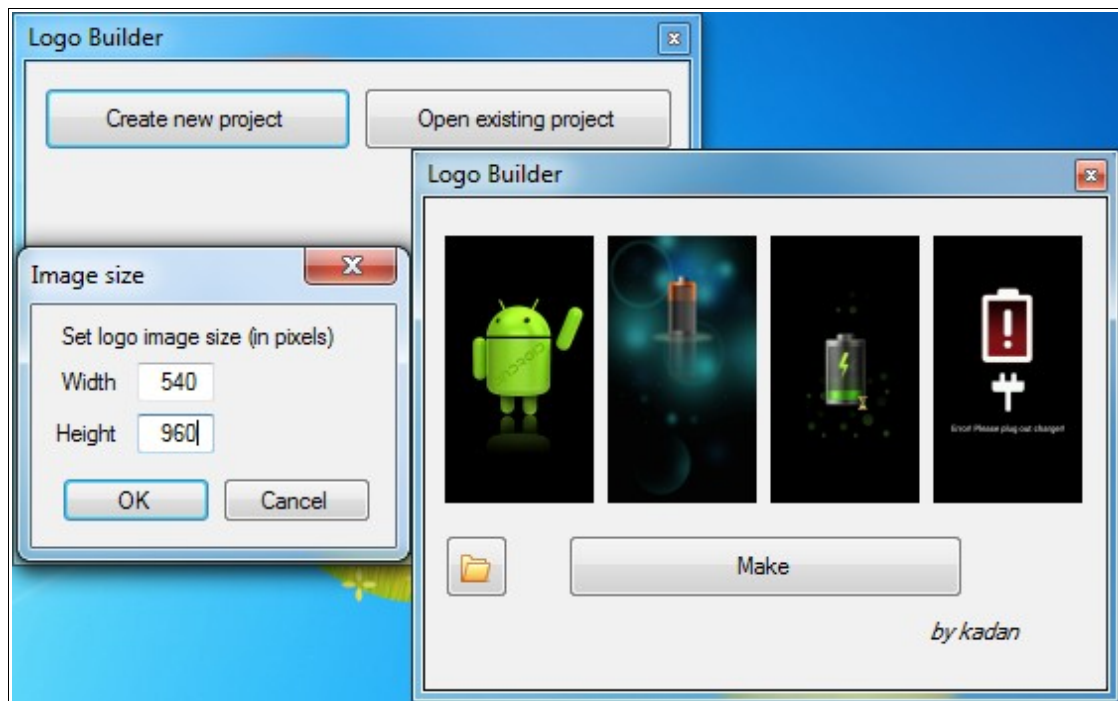
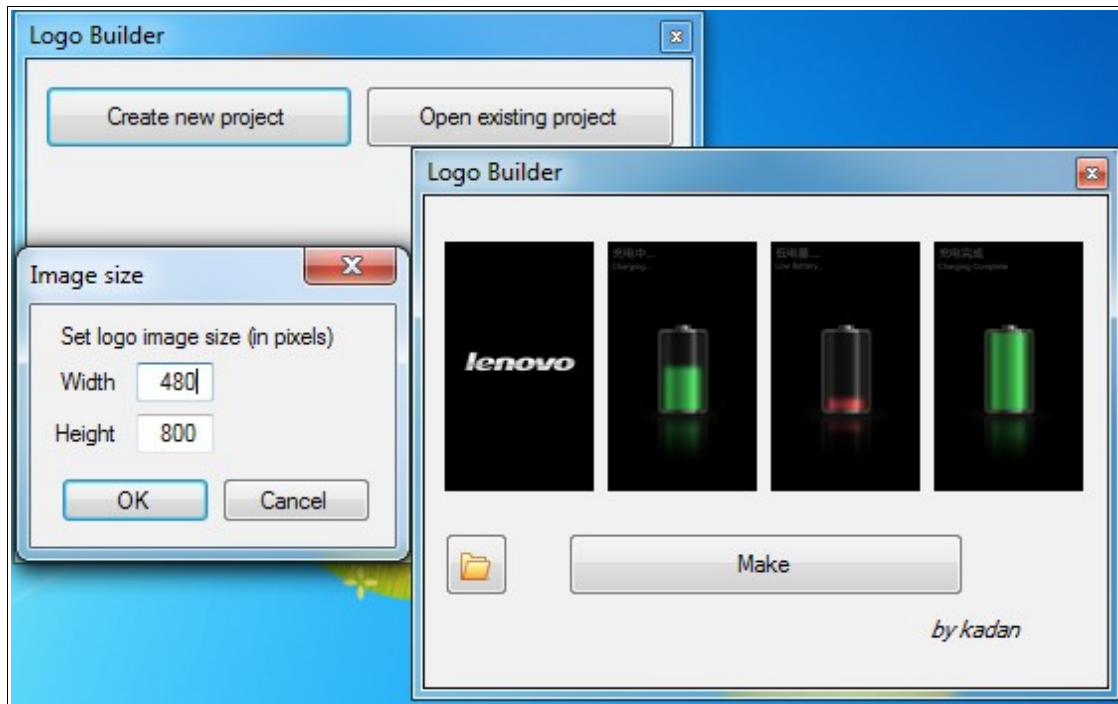


← At your project folder, an [update.zip](#) is created & [logo.bin](#) is created. You can't use this [update.zip](#) here as new CWMR will report error when installing it

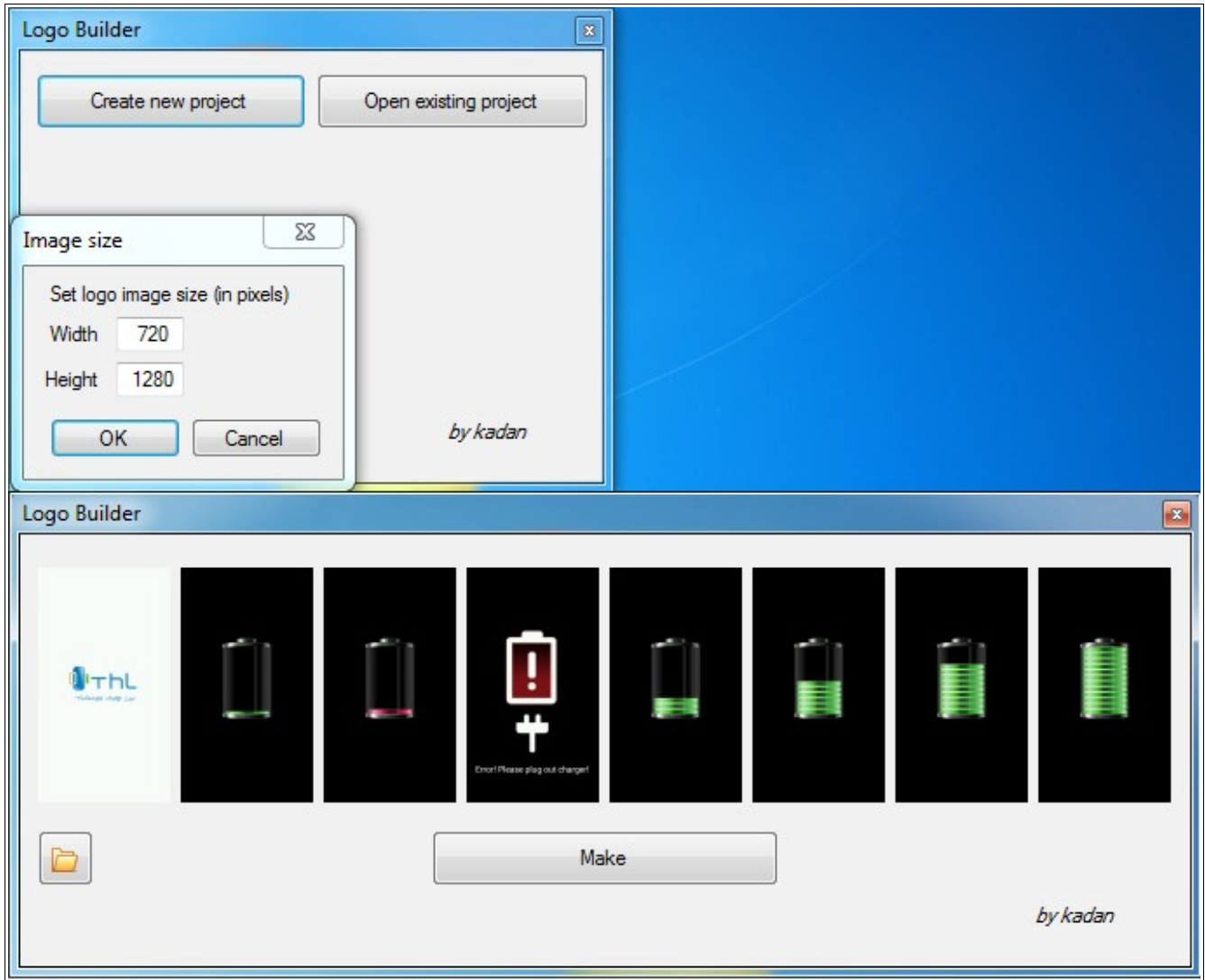
Instead use the [logo\\_bin.zip](#), open with 7-zip but don't extract it. Just drag & drop the newly created [logo.bin](#) in to [logo\\_bin.zip](#) to replace existing [logo.bin](#) & flash it via CWMR. If created is [logo.img](#) then use [logo\\_img.zip](#)



[Samples of other MT6573/ MT6575/ MT6577 logo image resolution size](#)

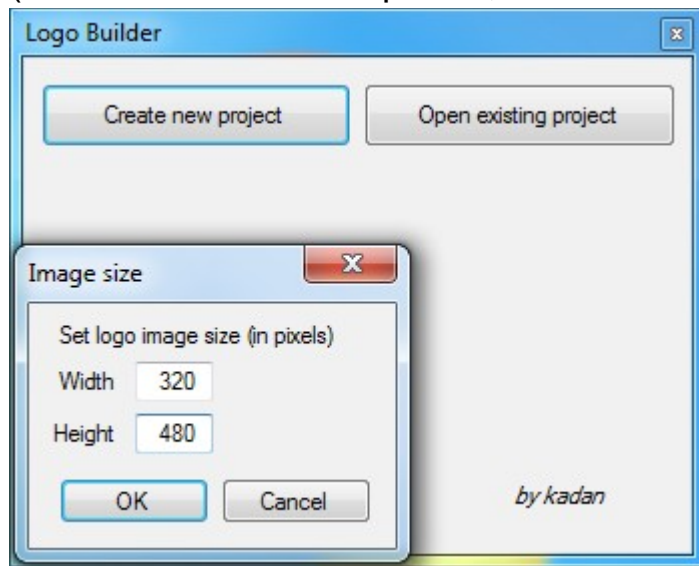




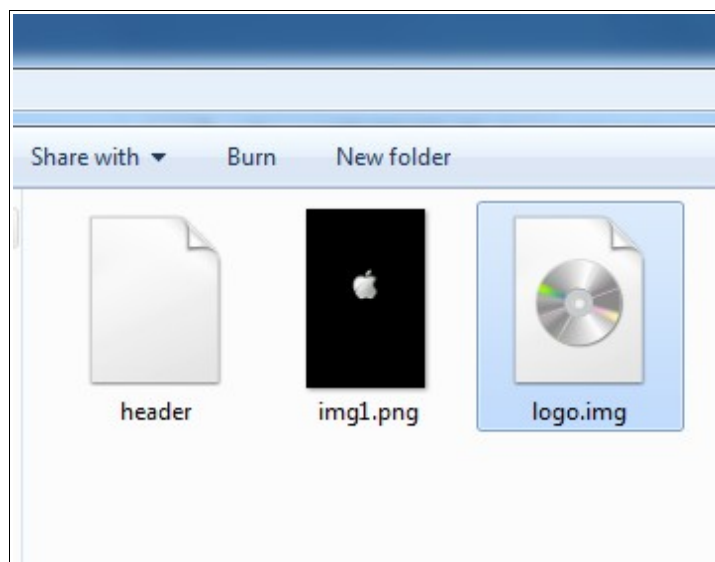
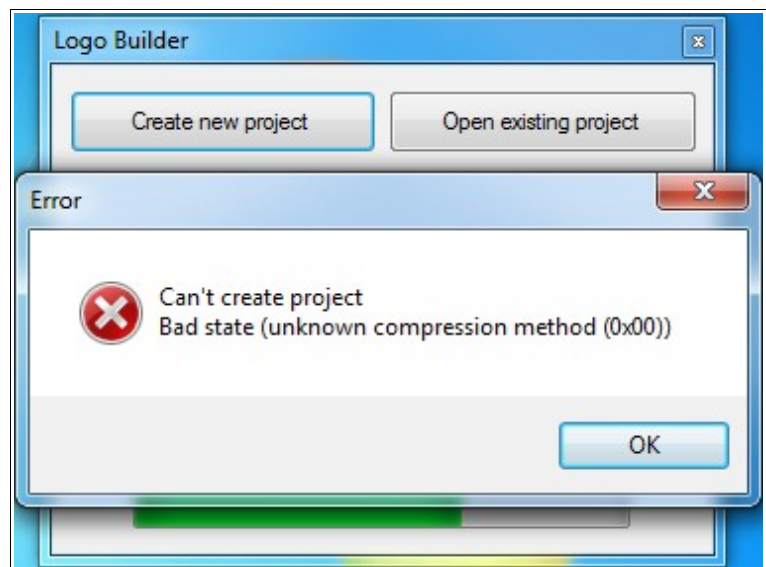




Patching & using [logo.img/ logo.bin](#) from other [logo.img/ logo.bin](#)  
( even when error is reported, it works fine )



An error has been detected



For this example, there is an [img1.png](#) created in spite of the error message. When you select [open existing project](#), it would not work



You can copy [./project](#) & [header](#) file from any working 320x480 extracted earlier & copy it over to this error project folder to replace it. Now, when you select [open existing project](#), the image will be displayed. You can proceed to [Make](#) & [logo.bin](#) will be created. However, be warn that the battery charging won't be displayed when use with only one image



So it is advisable for your to use stock [logo.img](#) & copy over the [2<sup>nd</sup>](#) or [3<sup>rd</sup>](#) image then the charging image will be working correctly when the phone is switch off & it is in charging mode. A bit of trial & error is required in creating a full working [logo.bin/ logo.img](#) for patching